

MANUFACTURING SERVICES

Over a Century of Manufacturing Experience



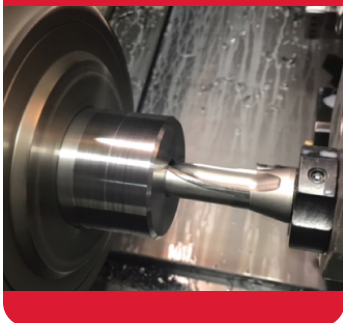
With over 100 years of experience manufacturing products for the metalworking market place, Cleveland Steel Tool is your ideal source for an outside manufacturing partner. We deliver quality products on time and on budget. Our reliable, highly skilled workforce provides expert craftsmanship and is guided by our ISO-9001:2015 quality system and a commitment to continuous improvement. We will help reduce your costs and improve your time to market.

Finished Products in Almost No Time

Whether you require high volumes or low, our experienced team can assist you through every step of the product development process. We specialize in rapid turnaround, and can inventory finished or semi-finished components. Starting with product design, and moving through engineering, manufacturing, quality control, and shipping, we provide a value added solution.

Steel • Aluminum • Bronze • Angle
High Mix- Low Volume or High Volume- Low Mix

CNC Turning



CNC Milling



Grinding



Fabricating



MANUFACTURING SERVICES

GETTING STARTED

- Product Design
- Engineering Support
- Prototyping
- Tolerances from .0005"
- Reverse Engineering

OUR PROCESSES

- CNC Milling
- CNC Turning
- Grinding
- Coping
- Notching
- Punching
- Shearing
- Broaching

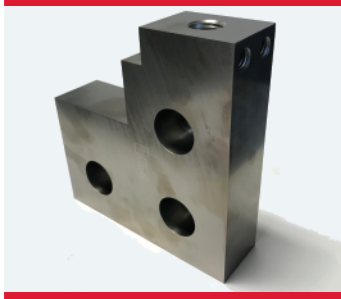
ADDING VALUE

- Quality Assurance
- Laser Marking
- Final Inspection
- Packaging
- Shipping

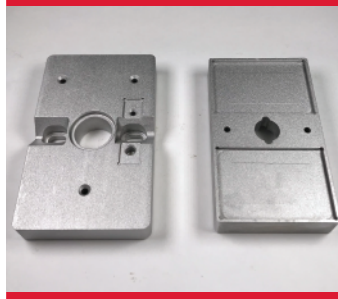
CNC Turning



CNC Milling



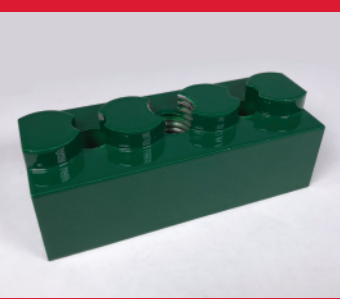
Prototyping



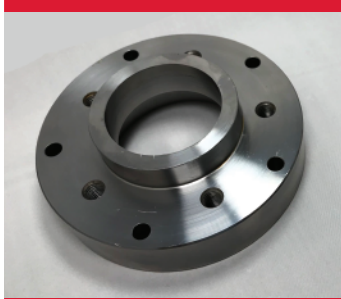
CNC Turning



CNC Milling



CNC Turning



Fabricating



Die Sets



COMMITMENT TO QUALITY

Cleveland Steel Tool is dedicated to meeting the needs and expectations of its customers. We will set the standard - and continually increase it - in our industry for the highest quality products, the fastest order fulfillment, and value added customer service, delivered at a competitive price.